



DANES PARK

# The Harleigh

Two bedroom mid terrace house with parking



Computer Generated Image.



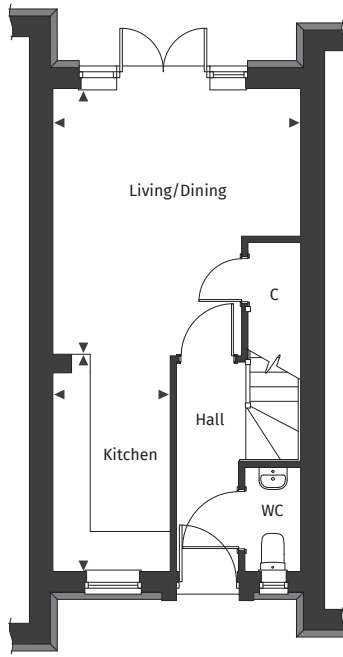
[Floor plans and dimensions >](#)

# The Harleigh

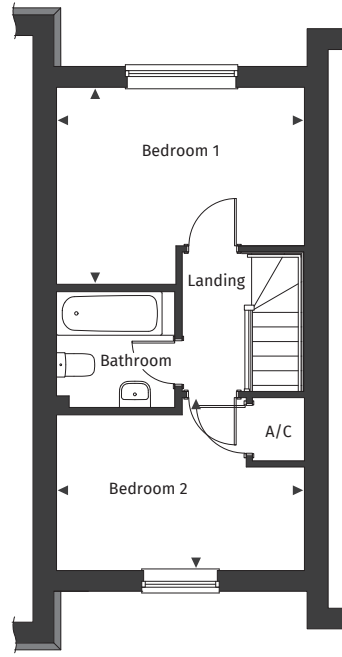
Floor plans and computer generated images are indicative only.



Ground floor



First floor

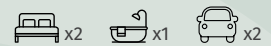


Floor plans are not to scale.

**Plot number** 31, 161\*

See separate site plan for plot location.

\*Plot 161 has an Air Source Heat Pump (ASHP) with multi-zone underfloor heating to ground floor. This is not standard on a Silver Specification home. \*Plot 31 has an Air Source Heat Pump (ASHP) and radiators with thermostatic valves as detailed for our Silver Specification homes.



**Ground floor**

Kitchen	1.87m x 3.50m	6' 1" x 11' 5"
Living/Dining	3.99m x 4.28m	13' 1" x 14' 0"

**First floor**

Bedroom 1	3.99m x 3.17m	13' 1" x 10' 5"
Bedroom 2	3.99m x 2.82m	13' 1" x 9' 3"

◀ ▶ Maximum dimension    A/C Airing Cupboard    C Cupboard

**For full details please contact our Sales Team:**

**Call:** 01425 626938 | **Email:** danespark@pennyfarthinghomes.co.uk | **Website:** pennyfarthinghomes.co.uk

The Computer Generated Image depicted here is an artistic representation of plot 31 Danes Park. Actual building plots may vary in terms of orientation, topography, landscaping, neighbouring structures, and other site-specific factors. Buyers should refer to detailed site plans, elevations, and architectural specifications for accurate information regarding individual plots and as built. Version 4. Correct at time of publication, March 2026.