



OAKWOOD
GROVE

The Bolderbury

3 bedroom detached house with garage



Computer Generated Image.



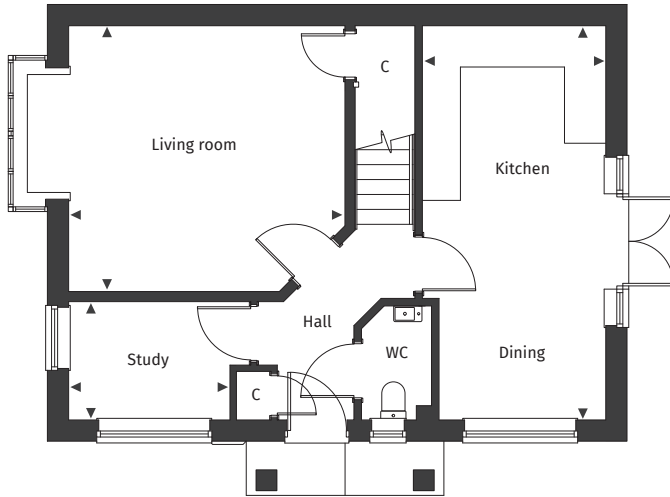
[Floor plans and dimensions >](#)

The Bolderbury

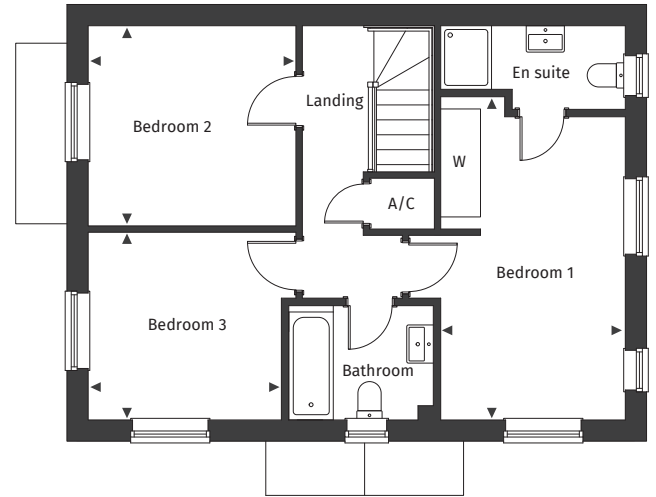
Floor plans and computer generated images are indicative only.



Ground floor

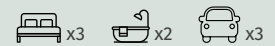


First floor



Plot number 1

See separate site plan for plot location.



Ground floor

Kitchen/Dining	2.99m x 6.20m	9' 5" x 20' 4"
Living room	4.34m x 4.18m	14' 3" x 13' 8"
Study	2.54m x 1.86m	8' 4" x 6' 1"

First floor

Bedroom 1	2.90m x 4.88m	9' 6" x 16' 0"
Bedroom 2	3.27m x 3.15m	10' 8" x 10' 4"
Bedroom 3	3.04m x 2.95m	9' 11" x 9' 8"

◀ ▶ Maximum dimension A/C Airing Cupboard C Cupboard W Wardrobe

For full details please contact our Sales Team:

Call: 01425 563 223 | Email: oakwoodgrove@pennyfarthinghomes.co.uk | Website: pennyfarthinghomes.co.uk