



OAKWOOD  
GROVE

# The Chestnut

3 bedroom bungalow with garage



Computer Generated Image.

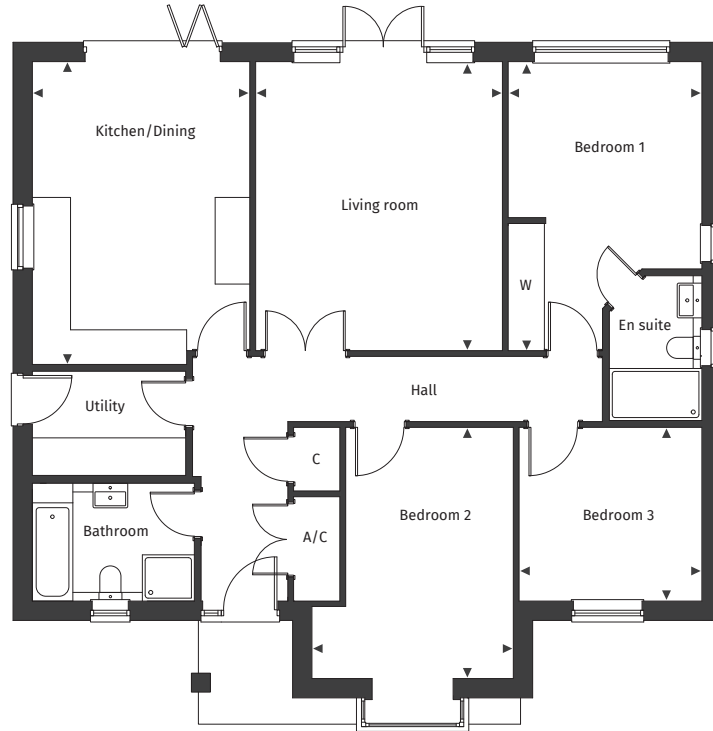


PENNYFARTHING  
*Builders of Quality Homes*

[Floor plans and dimensions >](#)

# The Chestnut

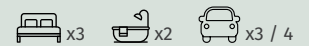
Floor plans and computer generated images are indicative only.



## Plot numbers 3, 10, 11, 15 & 17

See separate site plan for plot location.

Plans shown for plots 3, 11 & 17. Plots 10 & 15 are handed.



## Dimensions

Kitchen/Dining	3.76m x 5.23m	12' 4" x 17' 2"	Bedroom 2	3.48m x 4.34m	11' 5" x 14' 3"
Living room	4.27m x 5.00m	14' 0" x 16' 4"	Bedroom 3	3.16m x 3.00m	10' 4" x 9' 10"
Bedroom 1	3.35m x 5.00m	10' 11" x 16' 4"			

◀ ▶ Maximum dimension A/C Airing Cupboard C Cupboard W Wardrobe

For full details please contact our Sales Team:

Call: 01425 563 223 | Email: oakwoodgrove@pennyfarthinghomes.co.uk | Website: pennyfarthinghomes.co.uk