



# The Bolderbury

3 bedroom detached home

Whitsbury Green | Whitsbury Road | Fordingbridge | SP6 1NQ



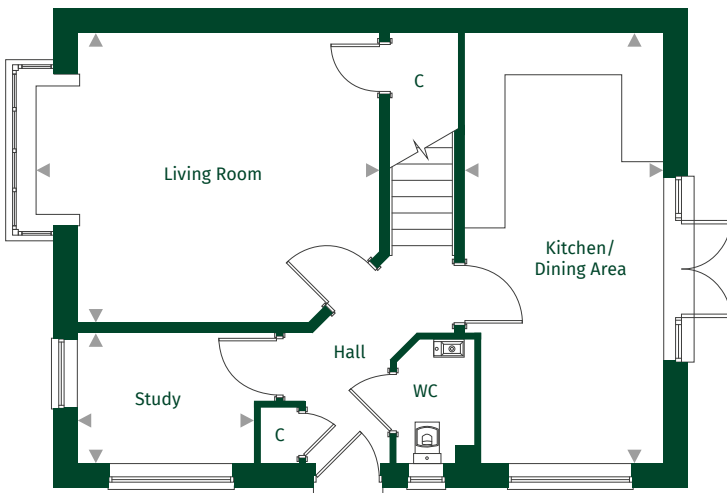
# The Bolderbury

**Standard Layout** Plots: 32 | 37 | 49    **Handed** Plots: 11 | 31 | 55

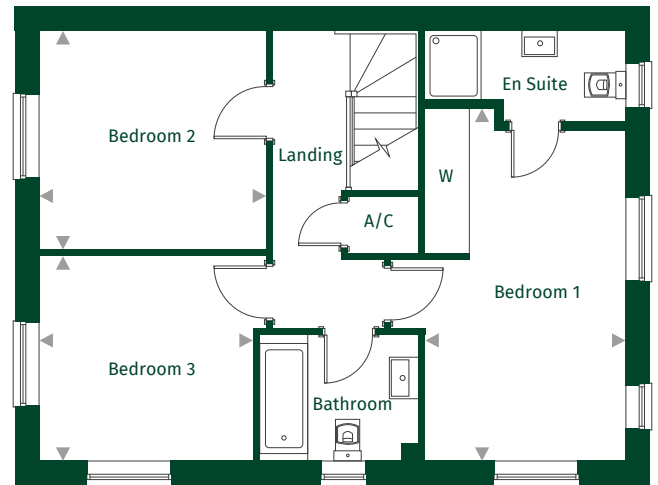
 x3     x2



**Ground Floor**



**First Floor**



Kitchen/Dining Area	6.20m x 2.89m	20'3" x 9'4"
Living Room	5.05m x 4.18m	16'5" x 13'7"
Study	3.03m x 1.86m	9'9" x 6'2"

Bedroom 1	4.81m x 2.88m	15'7" x 9'4"
Bedroom 2	3.31m x 3.19m	10'8" x 10'4"
Bedroom 3	3.11m x 2.99m	10'2" x 9'8"

**Key:**

◀ ▶ Maximum dimension    C = Cupboard    W = Wardrobe    A/C = Airing Cupboard

For full details please contact our Sales Team:

**Call:** 01425 541818 | **Email:** whitsburygreen@pennyfarthinghomes.co.uk | **Website:** pennyfarthinghomes.co.uk

Floorplans and CGIs are indicative only. The floor plans illustrate a typical layout of this house type. For exact plot specification, details of external and internal finishes, dimensions and floor plan differences please speak to a Sales Adviser. Correct at time of going to print, November 2023.