



# The Amberdale

2 bedroom detached bungalow

Whitsbury Green | Whitsbury Road | Fordingbridge | SP6 1NQ



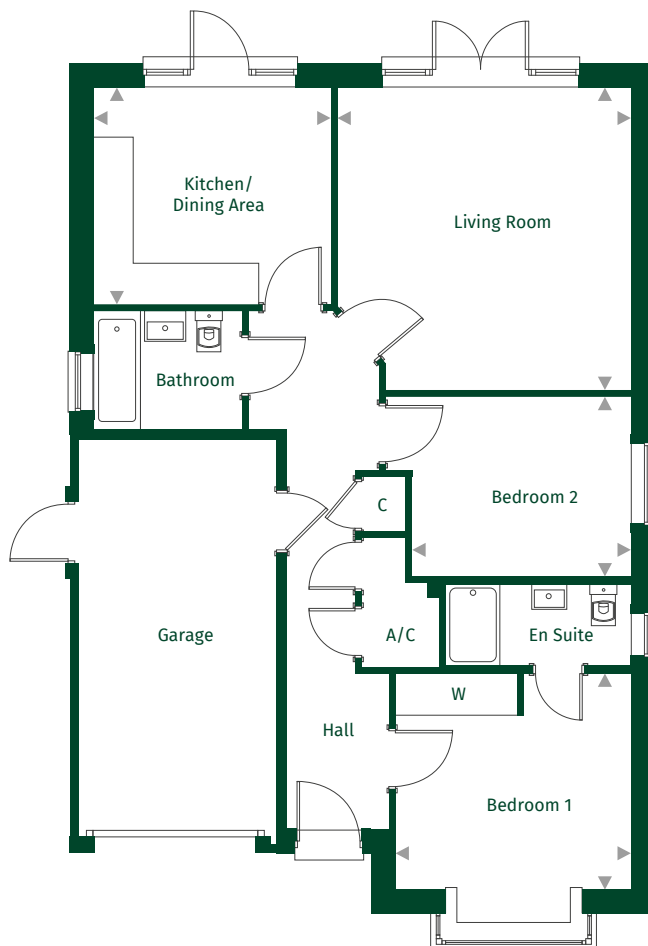
# The Amberdale

Standard Layout Plots: 15 | 16

 x2  x2



## Ground Floor



Kitchen/Dining Area	3.53m x 3.23m	11'6" x 10'7"
Living Room	4.50m x 4.38m	14'9" x 14'4"
Bedroom 1	3.57m x 3.28m	11'6" x 10'6"
Bedroom 2	3.65m x 2.71m	11'11" x 8'10"

### Key:

◀ ▶ Maximum dimension C = Cupboard W = Wardrobe A/C = Airing Cupboard

For full details please contact our Sales Team:

**Call:** 01425 541818 | **Email:** whitsburygreen@pennyfarthinghomes.co.uk | **Website:** pennyfarthinghomes.co.uk

Floorplans and CGIs are indicative only. The floor plans illustrate a typical layout of this house type. For exact plot specification, details of external and internal finishes, dimensions and floor plan differences please speak to a Sales Adviser. Correct at time of going to print, November 2023.