



# The Riverdale

3 bedroom detached bungalow

Whitsbury Green | Whitsbury Road | Fordingbridge | SP6 1NQ



# The Riverdale

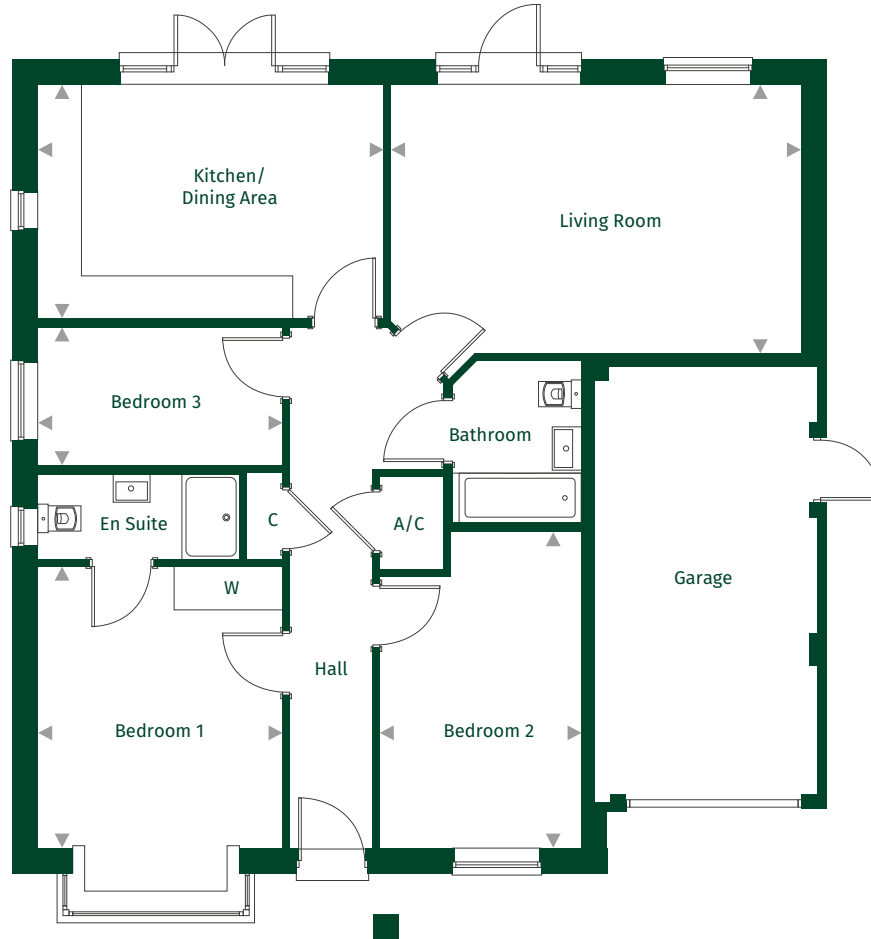
Standard Layout Plot: 3

Handed Plot: 17

 x3  x2



## Ground Floor



Kitchen/Dining Area	4.79m x 3.28m	15'8" x 10'9"
Living Room	5.68m x 3.74m	18'7" x 12'3"
Bedroom 1	3.88m x 3.39m	12'9" x 11'1"
Bedroom 2	4.37m x 2.80m	14'4" x 9'2"
Bedroom 3	3.39m x 1.91m	11'1" x 6'3"

### Key:

◀ ▶ Maximum dimension C = Cupboard W = Wardrobe A/C = Airing Cupboard

For full details please contact our Sales Team:

Call: 01425 541818 | Email: [whitsburygreen@pennyfarthinghomes.co.uk](mailto:whitsburygreen@pennyfarthinghomes.co.uk) | Website: [pennyfarthinghomes.co.uk](http://pennyfarthinghomes.co.uk)

Floorplans and CGIs are indicative only. The floor plans illustrate a typical layout of this house type. For exact plot specification, details of external and internal finishes, dimensions and floor plan differences please speak to a Sales Adviser. Correct at time of going to print, November 2023.