



The Birch

3 bedroom detached bungalow

Whitsbury Green | Whitsbury Road | Fordingbridge | SP6 1NQ



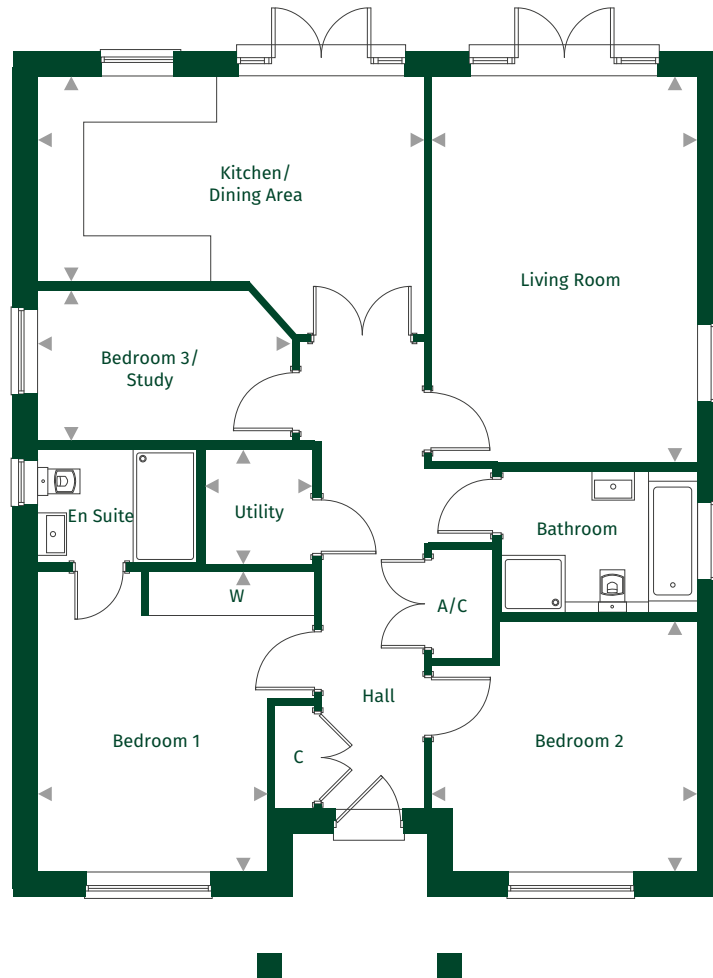
The Birch

Standard Layout Plots: 2 | 18

 x3  x2



Ground Floor



Kitchen/Dining Area	5.46m x 2.90m	17'11" x 9'6"
Living Room	5.45m x 3.76m	12'4" x 17'10"
Utility	1.61m x 1.53m	5'3" x 5'0"
Bedroom 1	4.25m x 3.25m	13'11" x 10'8"
Bedroom 2	3.76m x 3.55m	12'4" x 11'7"
Bedroom 3/Study	3.60m x 2.16m	11'9" x 7'1"

Key:

◀ ▶ Maximum dimension C = Cupboard W = Wardrobe A/C = Airing Cupboard

For full details please contact our Sales Team:

Call: 01425 541818 | Email: whitsburygreen@pennyfarthinghomes.co.uk | Website: pennyfarthinghomes.co.uk

Floorplans and CGIs are indicative only. The floor plans illustrate a typical layout of this house type. For exact plot specification, details of external and internal finishes, dimensions and floor plan differences please speak to a Sales Adviser. Correct at time of going to print, November 2023.