



POTTERS
WOOD

The Bolderbury

3 bedroom detached house with garage.



Computer Generated Image.



PENNYFARTHING
Builders of Quality Homes

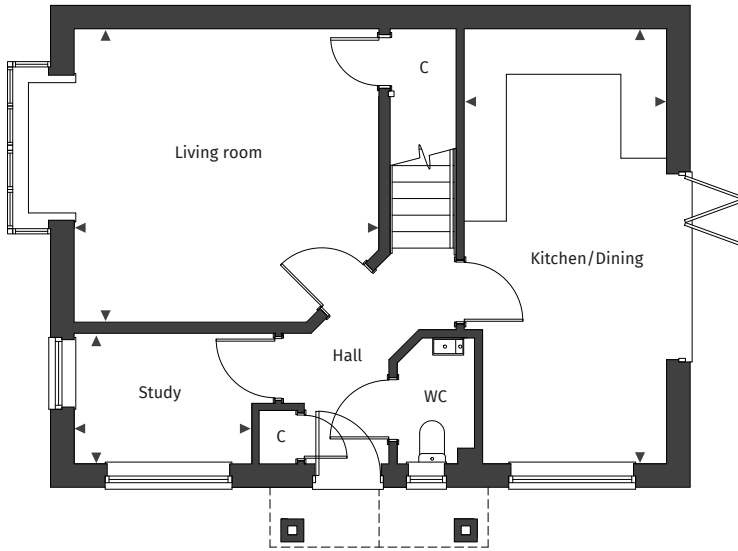
[Floor plans and dimensions >](#)

The Bolderbury

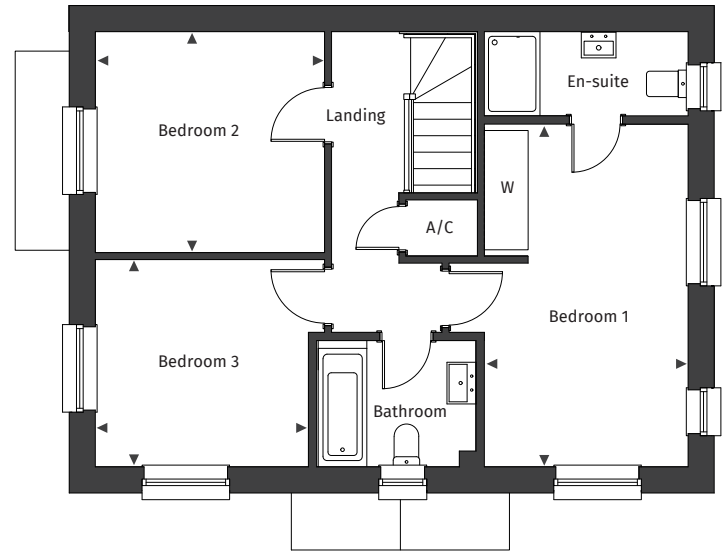
See separate site plan for plot locations.



Ground floor



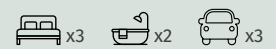
First floor



Floor plans are not to scale.

The Bolderbury plot numbers

234 & 241



Ground floor

Kitchen/Dining	2.99m x 6.20m / 9' 5" x 20' 4"
Living room	4.34m x 4.18m / 14' 3" x 13' 8"
Study	2.54m x 1.86m / 8' 4" x 6' 1"

First floor

Bedroom 1	2.90m x 4.88m	9' 6" x 16' 0"
Bedroom 2	3.27m x 3.15m	10' 8" x 10' 4"
Bedroom 3	3.04m x 2.95m	9' 11" x 9' 8"

◀ ▶ Maximum dimension A/C Airing Cupboard C Cupboard W Wardrobe

The CGI image depicted is an artistic representation of a standard house type. Actual building plots may vary in terms of orientation, topography, landscaping, neighbouring structures, and other site-specific factors. Buyers should refer to detailed site plans, elevations, and architectural specifications for accurate information regarding individual plots and as built.