



POTTERS  
WOOD

# The Bishopdale

Two bedroom bungalow with parking.



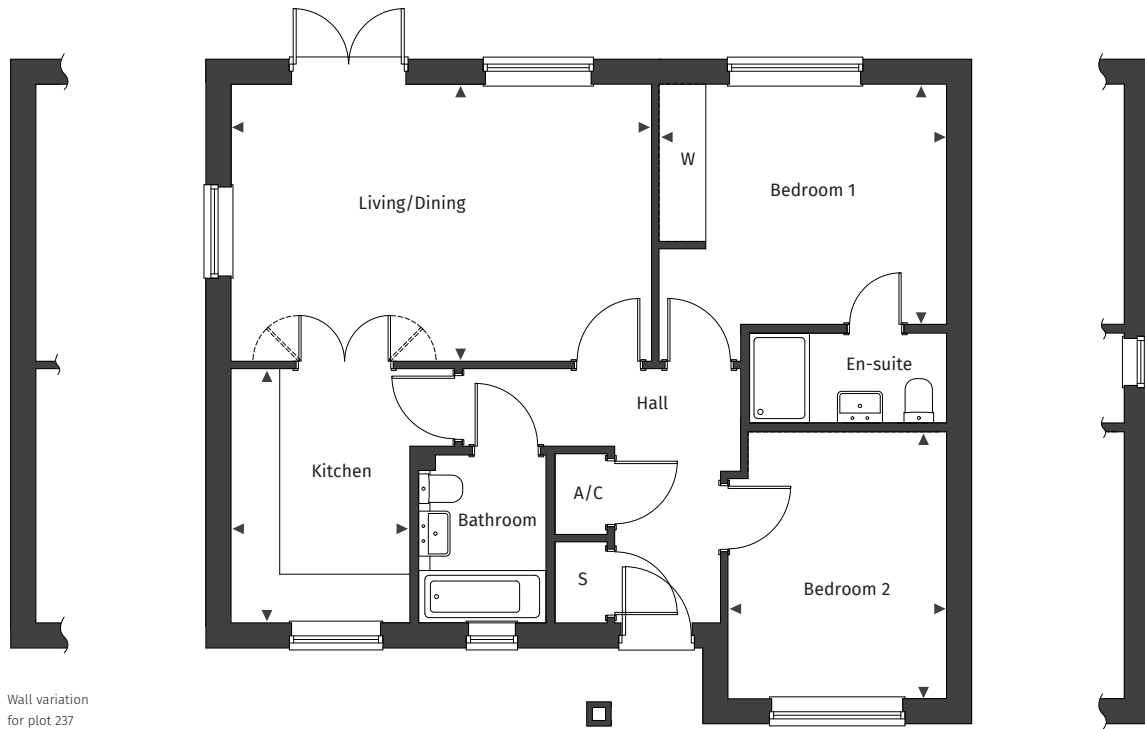
Computer Generated Image.



[Floor plans and dimensions >](#)

# The Bishopdale

Plans shown for plot 247. Plots 237, 238 & 240 are handed.  
See separate site plan for plot locations.



Wall variation for plot 237

Wall variation for plots 237, 238 & 240

Floor plans are not to scale.

## The Bishopdale plot numbers

237, 238, 240 & 247



**Living/Dining** 5.61m x 3.70m / 18' 5" x 12' 1"

**Bedroom 1** 3.84m x 3.20m / 12.7" x 10' 6"

**Kitchen** 2.38m x 3.39m / 7' 10" x 11' 1"

**Bedroom 2** 2.92m x 3.56m / 9' 7" x 11' 8"

◀ ▶ Maximum dimension A/C Airing Cupboard S Store W Wardrobe

The CGI image depicted is an artistic representation of a standard house type. Actual building plots may vary in terms of orientation, topography, landscaping, neighbouring structures, and other site-specific factors. Buyers should refer to detailed site plans, elevations, and architectural specifications for accurate information regarding individual plots and as built.