



OAKWOOD  
GROVE

# The Ashbury Bay

4 bedroom detached house with double garage



Computer Generated Image.



PENNYFARTHING  
*Builders of Quality Homes*

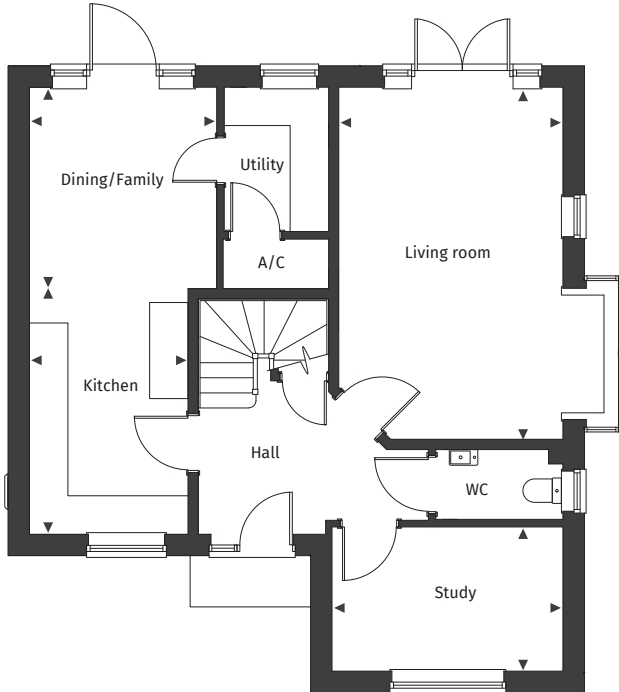
[Floor plans and dimensions >](#)

# The Ashbury Bay

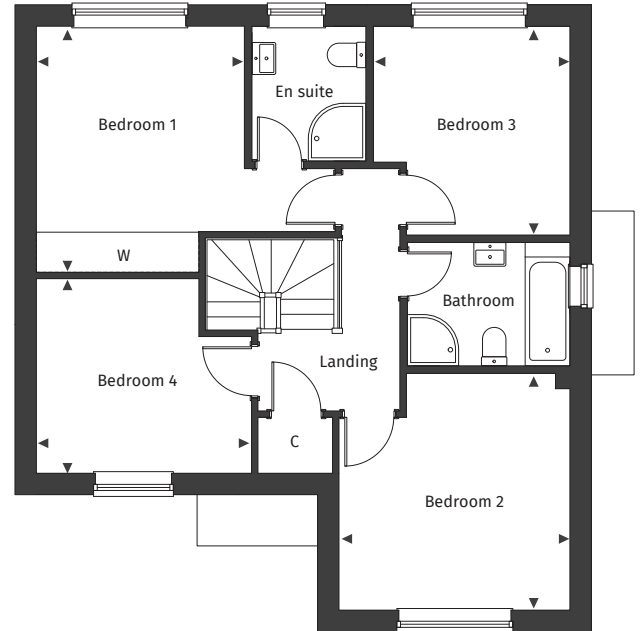
Floor plans and computer generated images are indicative only.



## Ground floor



## First floor



### Plot number 30

See separate site plan for plot location.



### Ground floor

Kitchen	2.47m x 3.83m	8' 1" x 12' 7"
Dining/Family	2.92m x 3.14m	9' 7" x 10' 3"
Living room	3.50m x 5.50m	11' 5" x 18' 0"
Study	3.60m x 2.25m	11' 10" x 7' 4"

### First floor

Bedroom 1	3.24m x 3.84m	10' 7" x 12' 7"
Bedroom 2	3.60m x 3.69m	11' 10" x 12' 1"
Bedroom 3	3.06m x 3.26m	10' 0" x 10' 8"
Bedroom 4	3.36m x 3.04m	11' 0" x 9' 11"

◀ ▶ Maximum dimension A/C Airing Cupboard C Cupboard W Wardrobe

For full details please contact our Sales Team:

Call: 01425 563 223 | Email: oakwoodgrove@pennyfarthinghomes.co.uk | Website: pennyfarthinghomes.co.uk