



OAKWOOD
GROVE

The Anderbury

3 bedroom detached house with garage



Computer Generated Image.



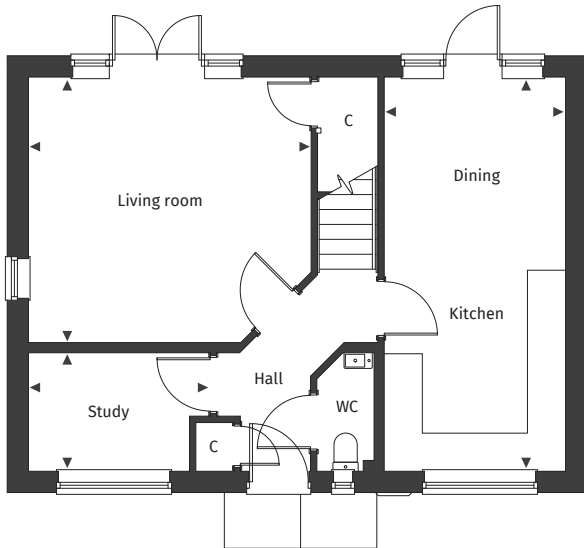
[Floor plans and dimensions >](#)

The Anderbury

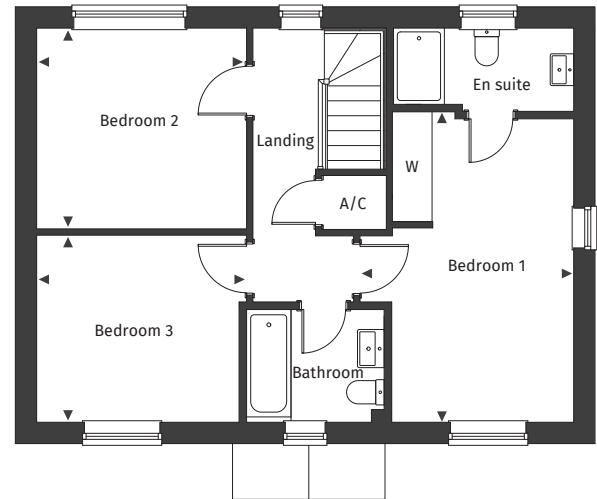
Floor plans and computer generated images are indicative only.



Ground floor

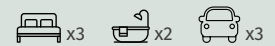


First floor



Plot number 31

See separate site plan for plot location.



Ground floor

Kitchen/Dining	2.85m x 6.20m	9' 6" x 20' 6"
Living room	4.45m x 4.18m	14' 7" x 13' 8"
Study	2.86m x 1.86m	9' 4 x 6' 1"

First floor

Bedroom 1	3.36m x 4.88m	11' 0" x 16' 0"
Bedroom 2	3.30m x 3.16m	10' 10 x 10' 4"
Bedroom 3	3.30m x 2.94	10' 10" x 9' 7"

◀ ▶ Maximum dimension A/C Airing Cupboard C Cupboard W Wardrobe

For full details please contact our Sales Team:

Call: 01425 563 223 | Email: oakwoodgrove@pennyfarthinghomes.co.uk | Website: pennyfarthinghomes.co.uk