



# The Hatchwood

3 bedroom semi-detached home

Whitsbury Green | Whitsbury Road | Fordingbridge | SP6 1NQ



**PENNYFARTHING**  
*Builders of Quality Homes*

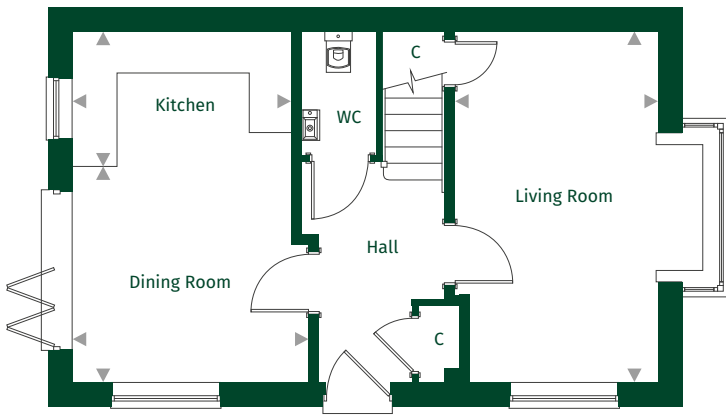
# The Hatchwood

Standard Layout Plot: 61

 x3  x2

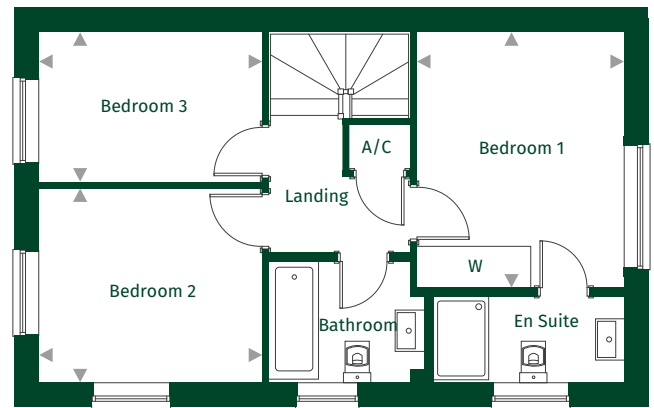


Ground Floor



Kitchen	3.15m x 2.20m	10'4" x 7'3"
Dining Room	3.40m x 2.84m	11'1" x 9'4"
Living Room	5.04m x 2.99m	16'6" x 9'9"

First Floor



Bedroom 1	3.68m x 2.99m	12'0" x 9'9"
Bedroom 2	3.32m x 2.80m	10'10" x 9'2"
Bedroom 3	3.32m x 2.14m	10'10" x 7'0"

## Key:

◀ ▶ Maximum dimension C = Cupboard W = Wardrobe A/C = Airing Cupboard

For full details please contact our Sales Team:

Call: 01425 541818 | Email: [whitsburygreen@pennyfarthinghomes.co.uk](mailto:whitsburygreen@pennyfarthinghomes.co.uk) | Website: [pennyfarthinghomes.co.uk](http://pennyfarthinghomes.co.uk)

Floorplans and CGIs are indicative only. The floor plans illustrate a typical layout of this house type. For exact plot specification, details of external and internal finishes, dimensions and floor plan differences please speak to a Sales Adviser. Correct at time of going to print, November 2023.